

Factsheet

AnachB.at – exactly my way
ITS Vienna Region





AnachB.at – the services

Conventional traffic services are based on static traffic data and often provide suboptimal or even wrong traffic information.

AnachB.at is linked with the dynamic traffic data pool which is supported by the numerous ITS partners and the new developed Graph Integration Platform GIP.

Therefore AnachB.at is always updated and more detailed than conventional traffic services:

- The **AnachB.at routing planners** offer the optimal route from A to B anytime – via public transport, bicycle, by foot or car or with an intermodal combination.
- **Special routing planners are existing** for Park & Ride and cycling with additional options.
- The **image of the traffic situation** offers an instant overview for the best route.
- **Construction sites** and **traffic information** are displayed separately.
- AnachB.at is also offered as a **mobile application** for the apple iPhone as well as widget and iGoogle gadget.

AnachB.at – GIP and traffic model

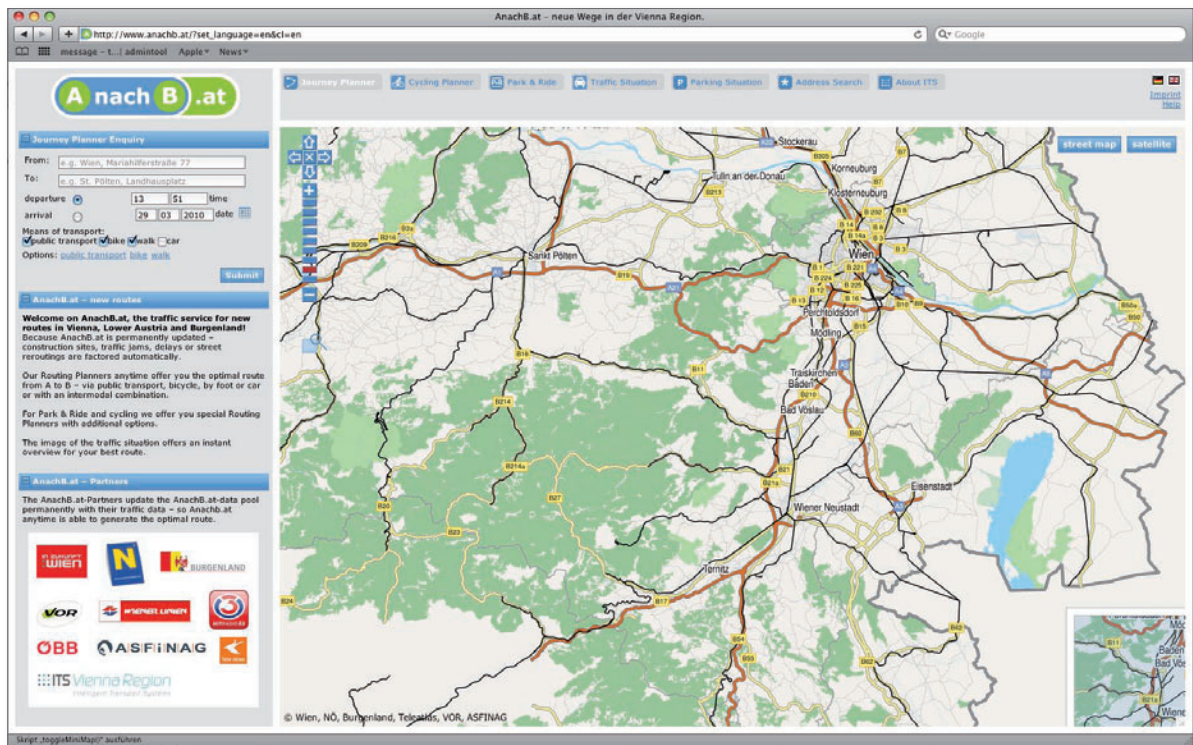
ITS Vienna Region has created the new common network Graph Integration Platform (GIP) which is in fine the digital picture of the traffic network including additional information.

The GIP now serves as a reference system for ITS Vienna Region, the public transport association of Vienna (VOR) and the administrations in the Vienna Region.

- The main advantage of the GIP is to develop and use uniform administrative procedures, data models and e-government processes.
- The GIP can be updated easily and decentralised via an interactive web client.
- Additionally the GIP is much more detailed than commercial available graphs.

With the GIP as a basis the traffic model of ITS Vienna Region combines all traffic data into a complete image of the current traffic situation.

All traffic data are filed so that the traffic model also can generate forecast for future traffic situation. GIP and the traffic model are the basis for the AnachB.at traffic infoservices.



AnachB.at – the innovative traffic infoservice

The main innovations and advantages of AnachB.at are:

- traffic data are permanently updated
- services are provided for all modes of transport
- AnachB.at is able to combine different modes
- the traffic model provides realistic travel time
- AnachB.at is free of charge and usable for everyone
- AnachB.at covers the entire Vienna Region

The AnachB.at partners supply the AnachB.at data pool permanently with their traffic data. So AnachB.at is able to generate the optimal route and offer the latest traffic information anytime.

Partners of AnachB.at are Wiener Linien, VOR, ASFInAG, ÖBB, taxi companies, the administrative offices of the three federal states and the Ö3 traffic editorial staff.

Numerous research projects and cooperations ensure ongoing optimisation of AnachB.at.

AnachB.at – exactly my way in the Vienna Region

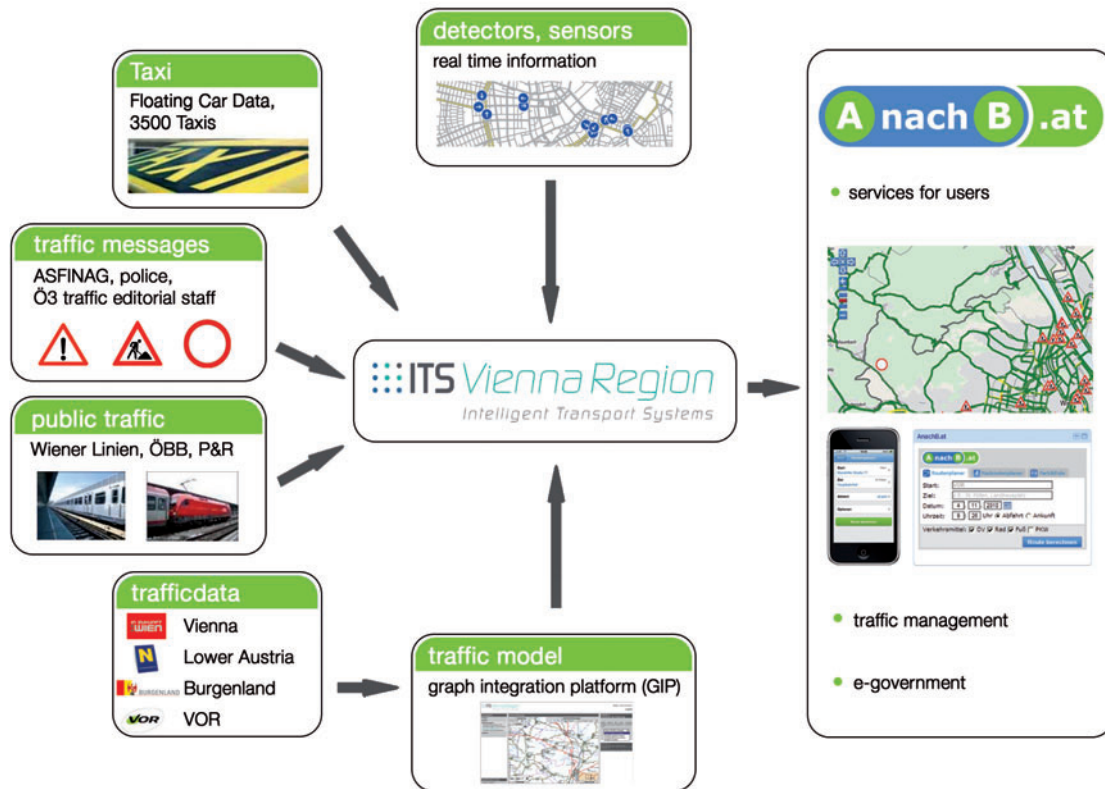
The Vienna Region consists of the three federal states Vienna, Lower Austria and Burgenland and is located in the eastern part of Austria respectively in Central Europe.

With an area of 23,500 km² the Vienna Region is living space for about 3.5 million people which are more than 40% of all inhabitants of Austria.

Intensive interactions exist between Vienna, Lower Austria and Burgenland, also in traffic and transport affairs. For modern mobility requirements always up to date traffic information available for the public is of highest importance.

As a result ITS Vienna Region was founded in 2006 as a cooperative traffic management project by Vienna, Lower Austria and Burgenland.

AnachB.at is the new permanently updated traffic infoservice for the Vienna Region developed by ITS Vienna Region.



AnachB.at – developed by ITS Vienna Region

ITS Vienna Region is the traffic management project of the three Austrian federal states Vienna, Lower Austria and Burgenland.

The project was founded in 2006 as an independent project embedded in the public transport association of the Vienna Region (VOR). The main target of ITS Vienna Region is to develop high quality and always up to date traffic services based on traffic policies, city development and environmental policies.

The services of ITS Vienna Region are designed to include and combine all modes of transport (Park & Ride, Bike & Ride). These services are now available for the public and free of charge on AnachB.at.

Additionally ITS Vienna Region supports the federal states and municipalities of the Vienna Region in optimising their e-government and traffic management.



Contact:

ITS Vienna Region
 Verkehrsverbund Ost-Region VOR GmbH
 Mariahilferstraße 77-79
 1060 Vienna
 AUSTRIA

Phone: +43 (0)1 581 30 60 200
 Mail: office@its-viennaregion.at
 Web: www.AnachB.at
 www.its-viennaregion.at